

# The Affordable Housing and Sustainable Communities Program

## AWARDS PROFILE: ASSEMBLYMEMBER LAURA FRIEDMAN, AD-43

Established in 2014, the AHSC program invests in *integrated* affordable homes, transportation, and community greening projects that improve the economic well-being and physical health of lower income Californians while significantly reducing greenhouse gas (GHGs) emissions.

### AHSC INVESTMENTS IN DISTRICT 43

**\$10,855,124**

Source: Round 3; SGC

### NEW AFFORDABLE APARTMENTS AND FAMILIES HOUSED

**59 / 649**

Source: Round 3; SGC, Enterprise, and AARP

### REDUCED GHG EMISSIONS

**6,748** Metric Tons of CO<sub>2</sub>

Source: Round 3; SGC

### REDUCED VEHICLE MILES TRAVELED ANNUALLY

**533,076**

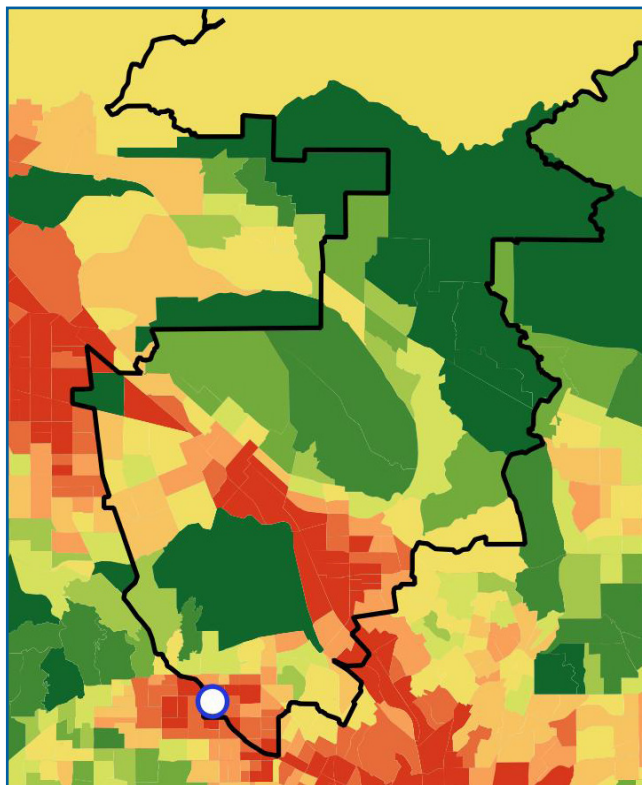
Source: Round 3; CHPC

**The AHSC program is a valuable investment in California's environmental and economic wellbeing.** On average, a family living in an AHSC-funded development saves \$745 *every month* through reduced rent and access to transit.

AHSC investments are also central to achieving the statewide greenhouse gas reduction goals established by AB 32 and SB 375. The first three funding rounds will reduce car travel by approximately 134 million miles and result in 41,000 additional daily transit riders.

By building affordable homes near quality transit, AHSC reduces air pollution, improves public health, and increases connectivity and accessibility to jobs and education.

*The AHSC program is administered by the Strategic Growth Council (SGC) and funded by the Greenhouse Gas Reduction Fund, which collects proceeds from cap-and-trade auctions.*

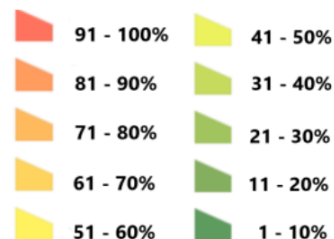


Source: CalEnviroScreen with Enterprise analysis.

### AWARD LOCATION

PATH Villas Hollywood,  
5621 Fernwood Avenue, Los Angeles

### CalEnviroScreen 3.0 Results



Last updated: 02/27/2019



101 Montgomery Street #1350, San Francisco, CA 94104  
[www.enterprisecommunity.org](http://www.enterprisecommunity.org)

For more information, contact Sally Greenspan at [SGreenspan@enterprisecommunity.org](mailto:SGreenspan@enterprisecommunity.org)